

TAKE EAST ,CLEAN THE WORLD !

TAKE EAST ,CLEAN THE WORLD !

EAST
Filtration

盈祥过滤设备(上海)有限公司
EAST Filtration (Shanghai) Co.,LTD.

盈祥过滤设备(上海)有限公司
EAST Filtration (Shanghai) Co.,LTD.

Add: Building6 No.185 YuanKe Road,MinHang
District ShangHai,China.

Tel: 021-64063276

Fax: 021-64887995

E-mail: angela@eastfiltration.com

Web: www.eastfiltration.com



GB/T19001-2008 ISO9001:2008
CE 20150528016E
FDA BST14060058Y-1RC-4
SGS Test Report No.SHAEC1518331101



EAST Filtration is a leading manufacturer in Shanghai,China. Its a high and new technology scientific integrated enterprise with the ability to research, produce, sell,and technical service. Achieved ISO9001, CE, FDA, SGS certifications .The company occupies the building area 5000 m², equips with advanced fabricating machinery, progressive process, complete workers and rich experiences technicians. Our products have been sold to more than 30 cities of our domestic market. In the mean while, we have been exporting our products to overseas market like United States, Malaysia, Italy, Japan etc .

We are searching for worldwide wholesales to share benefit together. Best market environment and free samples we made to protect and promote our wholesales. We can supply our wholesales one-step solution such as model selection, price or market location, after sale service etc. EAST filtering which has 12 years of filtering experiences proved to be your ideal partner. EAST succeed serve for BASF, General Motor, Master Kong, Brightdairy, SAKATA INK etc. Like you, We are so clear -what your customer want, how to make it and how to guide it.

EAST accordance to national machinery industry standards and customer requirements, provide the American Standard, Japanese Standard, German Standard specifications and various models of standard liquid filter housing system, filter bag and filter cartridge. Customized service available. Widely used in electronics, semiconductors, chemical, pharmaceutical, food, beverage, painting, paper making, automobile, printing ink, resin, water treatment etc various industrial field.

Our goal is to help customers provide the highest levels of product quality and output while helping them improve their bottom-line performance.

Stainless Steel Single Bag Filter Series

HTF Top Entry Bag Filter	4
HFF Side-in Bag Filter (Concave or Flat Cover)	4
HVF Side-in Economical Clamp Filter	4

Stainless Steel Multiple Bag Filter Series

HVMF High Flow Quick Open Multiple Bag Filter.....	5
HBMF High Flow Vertical Opening Multiple Bag Filter.....	6
HCMF High Flow Rotary Open Multiple Bag Filter	7
Light Duty Cartridge Filter /Heavy Duty Multi-Cartridge Filter	8
Magnetic Trap	8

Plastic Filter Series

HPF PP Side Entry Single Bag Filter	9
#2 Top Entry Plastic Single Bag Filter.....	9
222 Plastic Cartridge Filter	10

Self-Cleaning Filter Series

Plate Scraping Self-Cleaning Filter	11
Outside Scraping Self-Cleaning Filter	11
Inside Scraping Self-Cleaning Filter	12
Brush Self-Cleaning Filter	13
Automatic Back-Flushing Filter	14

Filter Accessories

Filter Accessories	15
--------------------------	----

Filter Bag Series

PE/PEXL Filter Bag	16
PO/POXL Filter Bag	16
Nylon Filter Bag	16
Filter Bag Specification	17
AGF Absolute Filtration Efficiency Filter Bag	18
Oil Absorbing Efficiency Filter Bag LCR-100	19
Oil Absorbing Efficiency Filter Bag LCR-500	19

Filter Cartridge Series

String Wound Filter Cartridge	20
Pleated Filter Cartridge	20
Melt blown Filter Cartridge	20
Activated Carbon Filter Cartridge	21
Metal Filter Cartridge	21
Titanium Rod Filter Cartridge	21

Application

Variety Industry	22
------------------------	----

HTF Top Entry Bag Filter

Technical Parameter:

- Material: SUS304、 SUS316L
 - Interface type: flange
 - Seal material: Buna, EPDM, Viton, Silicone
 - Seal type: O type seal ring
 - Applicable bags: 1#, 2#, 4# filter bag
 - Design pressure: 12bar/120℃
- Design flow: 6-40 cubic meter / hour
 - Surface treatment: Sandblasting or polishing
 - Installation leg adjustment available
 - Cover absolute sealing filter bag
 - Can be customized



HFF Side-in Bag Filter (Concave or Flat Cover)

Technical Parameter:

- Material: SUS304、 SUS316L
 - Interface type: thread or flange
 - Seal material: Buna, EPDM, Viton, Silicone
 - Seal type: O type seal ring
 - Applicable bags: 1#, 2#, 3#, 4# filter bag
- Design pressure: 10bar/120℃
 - Design flow: 6-40m³/h
 - Surface treatment: Sandblasting or polishing
 - Installation leg adjustment available
 - Can be customized



HVF Side-in Economical Clamp Filter

Technical Parameter:

- Material: SUS304、 SUS316L
 - Interface type: socket
 - Seal material: Buna, EPDM, Viton, Silicone
 - Seal type: O type seal ring
 - Applicable bags: 1#, 2#, 3#, 4# filter bag
- Design pressure: 6bar/120℃
 - Design flow: 6-40m³/h
 - Surface treatment: Sandblasting or polishing
 - Installation leg adjustment available
 - Can be customized



HVMF High Flow Quick Open Multiple Bag Filter

Technical Parameter:

- Material: SUS304、 SUS316L
 - Interface type: flange
 - Seal material: Buna, EPDM, Viton, Silicone
 - Mechanical clamp quick open less than 30 seconds
 - Applicable bags: 2# filter bag
 - Design flow: 60-480 cubic meter / hour
 - Surface treatment: Sandblasting or polishing
- Seal type: O type seal ring
 - Design pressure: 10bar
 - Multiple bag: 3-12 bags



Operation Steps:



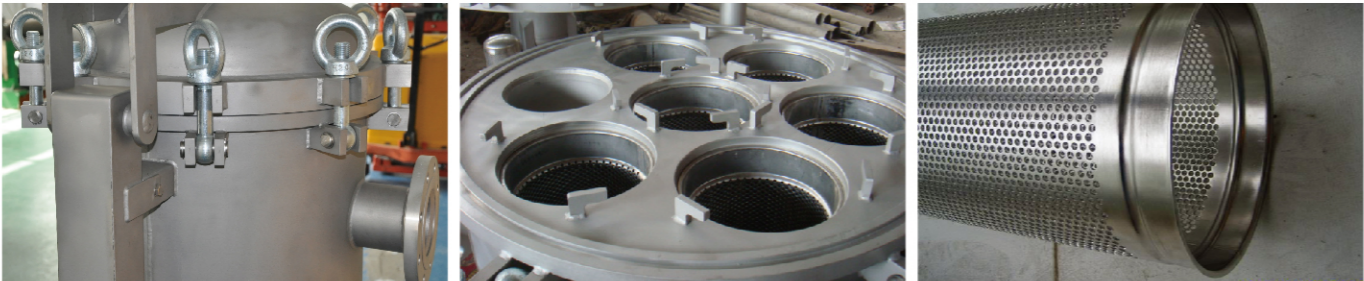
Specification:

Vessel Type	Size	No. of Filter Bag	Theoretical Flow Rate	Max. Operating Pressure	Max. Operating Temperature	Filter Area	Inlet / Outlet flange
HVMF-02-B-2-10-065G	#02	2	80 m³/h	10.0 bar	120 ℃	1.0 m²	3" - 4"
HVMF-03-B-2-10-080G	#02	3	120 m³/h	10.0 bar	120 ℃	1.5 m²	3" - 4"
HVMF-04-B-2-10-100G	#02	4	160 m³/h	10.0 bar	120 ℃	2.0 m²	3" - 6"
HVMF-05-B-2-10-125G	#02	5	200 m³/h	10.0 bar	120 ℃	2.5 m²	4" - 6"
HVMF-06-B-2-10-150G	#02	6	240 m³/h	10.0 bar	120 ℃	3.0 m²	4" - 6"
HVMF-08-B-2-10-200G	#02	8	320 m³/h	10.0 bar	120 ℃	4.0 m²	6" - 8"
HVMF-10-B-2-10-250G	#02	10	400 m³/h	10.0 bar	120 ℃	5.0 m²	8" - 10"
HVMF-12-B-2-10-300G	#02	12	480 m³/h	10.0 bar	120 ℃	6.0 m²	8" - 10"

HBMF High Flow Vertical Opening Multiple Bag Filter

Technical Parameter:

- Material: SUS304、 SUS316L
- Interface type: flange
- Applicable bags: 2# filter bag
- Design pressure: 10bar
- Design flow: 60-960 cubic meter / hour
- Surface treatment: Sandblasting or polishing
- Adopt vertical opening design, quick operation ,bolt combination to economical performance.
- Keeping 3 points balance to fasten bag as a way to avoid side leakage.
- From 3 to 24 bags for optional choice
- Suitable for large flow rate and large particle field



Specification:

Vessel Type	Size	No. of Filter Bag	Theoretical Flow Rate	Max. Operating Pressure	Max. Operating Temperature	Filter Area	Inlet / Outlet flange
HBMF-02-B-2-10-065G	#02	2	80 m³/h	10.0 bar	120 °C	1.0 m³	3” - 4”
HBMF-03-B-2-10-080G	#02	3	120 m³/h	10.0 bar	120 °C	1.5 m³	3” - 4”
HBMF-04-B-2-10-100G	#02	4	160 m³/h	10.0 bar	120 °C	2.0 m³	3” - 6”
HBMF-05-B-2-10-125G	#02	5	200 m³/h	10.0 bar	120 °C	2.5 m³	4” - 6”
HBMF-06-B-2-10-150G	#02	6	240 m³/h	10.0 bar	120 °C	3.0 m³	4” - 6”
HBMF-08-B-2-10-200G	#02	8	320 m³/h	10.0 bar	120 °C	4.0 m³	6” - 8”

HCMF High Flow Rotary Open Multiple Bag Filter

Technical Parameter:

- Material: SUS304、 SUS316L
- Interface type: flange
- Applicable bags: 2# filter bag
- Design pressure: 10bar
- Design flow: 60-960 cubic meter / hour
- Surface treatment: Glass Bead Blasted or food grade mechanical polishing
- Adopt unique mechanical rotating cover open, easy operation.
- Keeping 3 points balance to fasten bag as a way to avoid side leakage.
- From 3 to 24 bags for optional choice
- Suitable for large flow rate and large particle field



Specification:

Vessel Type	Size	No. of Filter Bag	Theoretical Flow Rate	Max. Operating Pressure	Max. Operating Temperature	Filter Area	Inlet / Outlet flange
HCMF-02-B-2-10-065G	#02	2	80 m³/h	10.0 bar	120 °C	1.0 m³	3” - 4”
HCMF-03-B-2-10-080G	#02	3	120 m³/h	10.0 bar	120 °C	1.5 m³	3” - 4”
HCMF-04-B-2-10-100G	#02	4	160 m³/h	10.0 bar	120 °C	2.0 m³	3” - 6”
HCMF-05-B-2-10-125G	#02	5	200 m³/h	10.0 bar	120 °C	2.5 m³	4” - 6”
HCMF-06-B-2-10-150G	#02	6	240 m³/h	10.0 bar	120 °C	3.0 m³	4” - 6”
HCMF-08-B-2-10-200G	#02	8	320 m³/h	10.0 bar	120 °C	4.0 m³	6” - 8”

Light Duty Cartridge Filter / Heavy Duty Multi-Cartridge Filter

Technical Parameter:

Light duty cartridge filter available in 3, 5 and 7 rounds of up to 40 cartridge length. Suitable for both double open DOE and single open SOE cartridge. Adopt clamp to quick open, easy operation and maintenance.

- Material: SUS304、 SUS316L
- Interface type: Inlet/Outlet - 2 inch NPT /ANSI Flange JIS and DIN Flange are also available
- Seal material: O-ring - EPDM (standard); NBR, Viton, PTFE, etc
- Design pressure: 8bar
- Surface treatment: sandblasting or polishing
- Heavy Duty Multi-Cartridge Filter accept 9-100 round (20 inch, 30 inch, 40 inch, 50 inch Cartridges); With swing eye bolt closure, mechanical spring stretch design to make the changing of cartridge simple and easy.
- Inlet/Outlet: 3"-12" flange

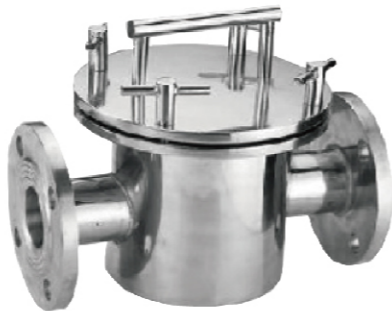


Magnetic Trap

Working Principle:

Magnetic trap is used for adsorb iron-cobalt-nickel from the liquid by fixed magnetic rod.

- Body material: SUS304、 SUS316L
- Peak field (Gauss): 3000GS,5000GS,9000GS,12000GS etc.
- Magnetic rod material: NdFeB magnet ,SmCo magnet
- Design temperature: Max150℃



HPF PP Side Entry Single Bag Filter

Technical Parameter:

- Material: polypropylene
- Applicable bags: 2#, 5# filter bag
- Design pressure: 6bar/85℃
- Design flow: 18-40 cubic meter / hour



Specification:

Model	Bag No.	Pressure	Flow rate	Flow Area	Precision	Inlet / Outlet	Material	Tem
YX-159PPR-5#	1(5#)	0.6 mpa	23 m³/h	2300 cm²	1-500 um	DN50 mm	PPR	5-90℃

#2 Top Entry Plastic Single Bag Filter

Technical Feature:

- Produced with excellent 100% PP (polypropylene).
- Superior corrosion resistance to meet the many chemical acid liquid filtration applications.
- High precision casting of top cover, less weld, pressure stability
- Design like hunchback which make liquid flow fluently without leak.
- Unique one-piece molded body (seamless) for easy cleaning.



Specification:

Model	Bag No.	Pressure	Flow rate	Flow Area	Precision	Inlet / Outlet	Material	Tem
YX219PVDF-2#	1(2#)	0.6 Mpa	40 m³/h	5000 cm²	1-500 μm	DN65 mm	PVDF	5-90 ℃
YX219PPR-2#	1(2#)	0.6 Mpa	40 m³/h	5000 cm²	1-500 μm	DN65 mm	PPR	5-90 ℃
YX219PPR-2#-1.0A	1(2#)	1.0 Mpa	40 m³/h	5000 cm²	1-500 μm	DN65 mm	PPR	5-90 ℃

Plastic Filter

Material:

Plastic Filter is made by 100% polypropylene construction. Excellent chemical properties with PP material can meet many chemical acid and alkali solution, achieved high quality, high efficiency and economy.

Plastic cartridge filter for 222 Tine cartridge

Technical Parameter:

- Flow rate max: 9-108m³/h
- Work pressure max: 6bar/65℃
- Interface type: Flange
- Material: PP/Carbon steel lining plastic
- Specification: 3-18 cartridges for optional choice
- Length: 20”、30”、40”



Plastic Multiple Bag Filter

Technical Parameter:

- Technology Parameter: 90-180m³/h
- Work pressure max: 4bar/65℃
- Interface type: Flange
- Material: PP/Carbon steel lining plastic
- Specification: 2-8 bags for optional choice
- Precision: 1µm--500µm



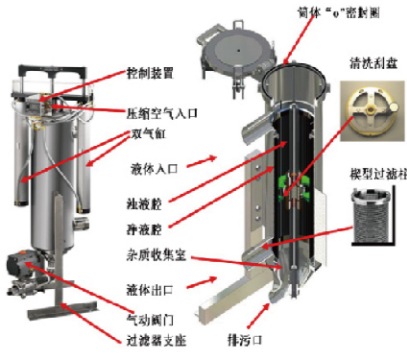
Plate Scraping Self-Cleaning Filter

Working Principle:

- Automatically remove the particles and impurities from the filter element internal surface by mechanical plate scraping.
- Adopt patent design plate which have spring round plate to scrap particle by remove up and down .
- Short discharge time ,only 0.7 second.Surely online filtration,online clean and discharge .

Technology Feature :

- It's designed for filtration highly viscosity liquid.
- Pressure difference can be 7.7bar.
- Absolutely online filtration,online clean and online discharge waste water .
- Highly filtration precision ,can be 15 micron.
- Easy operation and maintenance.
- Very short discharge time ,only 0.7 second ,less liquid loss.
- Pneumatic drive which anti-explosion.
- Air drive which economy.



Technical Parameter:

- Flow rate max: 48 cubic meter / hour
- Filtration precision: 15-1000 micron
- Max viscosity: 100000 cps
- Material: SUS304、 SUS316L
- Work temperature max: 160℃
- Work pressure max: 1.0Mpa
- Blow -off control: time control

Outside Scraping Self-Cleaning Filter

Working Principle:

Outside Scraping Self-Cleaning Filter removes particles from the filter element surface by the efficiently mechanical scraping, can work on-line continuously, consumes no disposal filter media, requires no frequent manual cleaning, is capable of the filtration for normal viscous liquids.

Technical Parameter:

- Flow rate max: 82m³/h (100 micron)
- Filtration precision: 50~3000 micron
- Viscosity: 50000 cps
- Material: SS 304, 316L etc
- Work temperature max: 160℃
- Work pressure max: 1.0Mpa
- Blow-off control: pressure difference control and time control
- Motor: worm geared motor 100W-250W; 380V



Inside Scraping Self-Cleaning Filter

Technical Parameter:

- Flow rate max: 650m³/h (100µm)
- Filter precision: 50~3000 micron
- Material: SS 304, 316L
- Work temperature max: 160 °C
- Work pressure max: 1.0Mpa
- Blow-off control: Pressure different control, time, manual
- Pressure and time composite control
- Viscosity max: 50000cps
- Blow-off time: 10~60s



Customized Option:

- EAST supply variety customized options to meet further filtration needs, improve filter process and operate OE.
- Adopt a inter layer to filter conduction oil (2 kg/cm²) or hot water (4 kg/cm²), keep the temperature and transmission performance.
 - Anti-explosion design, Save to filter flammable and combustibile liquids.
 - Food grade surface polish which easy clean.
 - With hand arm design to assist cover, So easy to maintenance.
 - Various modular combination meet larger flow requirement .
 - Removable filter car to filter on different position flexibly.

Technical Feature:

- Automatic 24-hour on-line filtration, no frequent changing out and cleaning
- No disposable filter media consumption, save filter media cost and environment cost.
- Stainless steel scraping blade, good impurity removing performance .
- Top quality V-SLOT filter element, accurate slots, extremely smooth, easy to scrap.
- Very low pressure drop, stable flow rate, save energy consumption.
- Close filtration, no dangerous liquid leakage, good for safe production.
- Discharge waste liquid with high impurity concentration, avoid valuable liquid loss.
- Various modular combination and automation modes available, meet different filtration needs.
- Adopt world-famous gear motor, high reliability and long service life .



Brush Self-Cleaning Filter

Filter Housing Introduction:

Brush self-cleaning filter is the filter which equip with high strength filter screen and SS brush inside .Adopt automatic control and manual control to achieve online filtration,self-clean and drain out.

Technical Parameter:

- Flow rate: 800m³/h
- Design pressure: 1.0Mpa
- Filter screen pressure resistance max: 0.2Mpa
- Design temperature: 120 °C
- Precision: 50-3000µm
- Washing time: 10-60s (adjustable)
- Wash type: timing control and pressure difference,manual
- Sewage type: Scraping brush
- Electronic control: 380V/50Hz
- Blow off: Auto, Manual
- Filter screen: stainless steel wedge-shaped screen
- Liquid requirement: liquid suspended matter less than 60mg/L, can be 110mg/L in short time. If not, liquid should be pre filter before inlet.

Construction:

Composed of the drive mechanism, the control circuit (including the pressure switch), filter components, cleaning device(brush), connecting flanges.

Working Principle:

Water enters into the filter, the mechanical impurities are intercepted. When the impurities accumulate for a period which makes inlet outlet pressure differential, then the differential pressure switch will send signal, while the PLC command is issued, transmission motor starts, the drain valve opens, the impurities deposited on the filter is brushed away, and drain out. The whole process is without personnel, without downtime, produce automatically.



Automatic Back-Flushing Filter

Filter Housing Introduction:

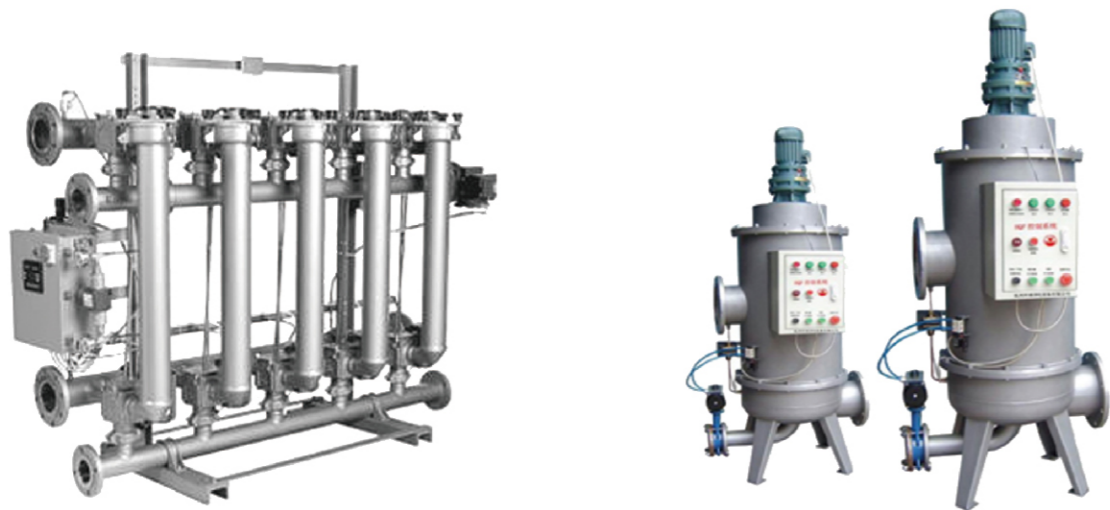
Automatic Back-Flushing Filter has metal back flushing filter cartridges inside. When filter elements clogged, a specially designed back-flushing arm will clean the elements one by one. When filtering, the water enters the element from both ends. When self-cleaning, the top end partly opens and the water flushed out of the bottom end.

Technical Feature

- Easy installation, Can install to pipeline directly.
- Small volume, lower cost, no filter media,long life time.
- High automatic level which is good for operation and management, can be long-term and unmanned management operation.
- Small pressure loss, energy saving, the use of main hydraulic back washing, No need back wash water.
- Wide application, It can maintain the normal operation in the process of any periodic back washing.

Technical Parameter:

- Design flow max: 1200m³/h
- Minimum operating pressure: 0.2Mpa
- Maximum working pressure: 0.7Mpa
- Clean filter pressure drop: 0.1Mpa
- Operating temperature: 65℃
- Filtration precision: 0.025-6µm
- Control Voltage: 24VDC
- Rinse water consumption: (minimum working pressure) 0.05T
- Housing material: carbon steel, stainless steel



Filter Accessories



PE / PEXL Filter Bag

Technical Parameter:

- Material: food grade polyester non woven felt-needle punched felt
- Micron rating: 0.5-200μm
- Features: 3D space inside of non-woven fibers, capture small particle directly, high efficiency, low cost, large capacity of dirty particles, excellent air permeability.
- Material: Polyester extended life felt
- Features: made by more micro fiber. Dirty capacity can be 4 times than general felt. Longer life time, Larger capacity.



PP / POXL Filter Bag

Technical Parameter:

- Material: food grade polypropylene non woven felt-needle punched felt
- Micron rating: 0.5-200μm
- Features: 3D space inside of non-woven fibers, capture small particle directly, high efficiency, low cost, large capacity of dirty particles, excellent air permeability.
- Material: polypropylene extended life felt
- Features: made by more micro fiber. Dirty capacity can be 4 times than general felt. Longer life time, Larger capacity.



NMO Nylon Filter Bag

Technical Parameter:

- Material: made of monofilament nylon mesh
- Micron rating: 1-1250μm
- Features: Use the principle of surface filtration; non-deformable single fiber is made into mesh according to special weaving type, and is welded together to add mesh strength. The impurities can be hold back onto the filtering surface, suites the rough particle filtration.
- Advantages: can be repeatedly cleaned, it has lower consumption cost.



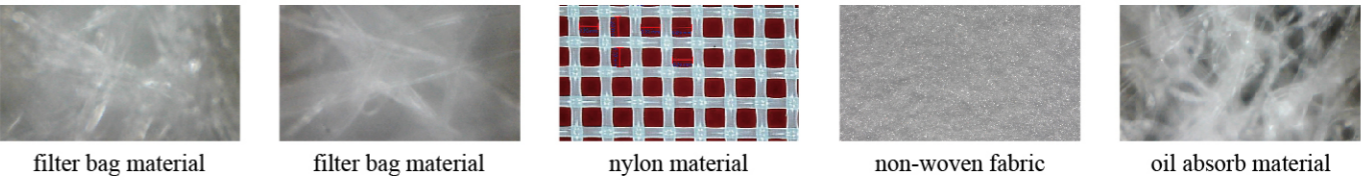
Size Option

SIZE	maxflow (m³/h)	FILTER AREA (m²)	VOLUME (L)	Diameter (Inch)	Length (Inch)
#01	20	0.25	8.0	7	17
#02	40	0.50	17.0	7	32
#03	6	0.09	1.30	4	9
#04	12	0.16	2.50	4	15
#05	18	0.20	3.80	6	20

Ring Option



Bag Material Option



Filter Media	TEMP (°C)	WATER	Microbe	Organic Solvent	Aliphatic	Aromatic	Weak alkali	Weak acid	Strong alkali
Polypropylene	90	☆	☆	☆		☆	☆	☆	
Polyester	160	☆	☆	☆	☆	☆	☆	☆	
Nylon	160	☆	☆	☆	☆	☆	☆		

Filter Bag Performance

Material	Material	Structure	Micron(μm)	Production Type	Filter Type	Temp
PO	polypropylene	Needle	1/5/10/25/50/75/100/150/200	Seam/Weld	Deep	80
POXL	polypropylene extended life felt		1/5/10/25/50/75/100	Seam/Weld	Deep	80
PE	polyester		1/5/10/25/50/75/100/150/200	Seam/Weld	Deep	170
PEXL	polyester extended life felt		1/5/10/25/50/75/100	Seam/Weld	Deep	170
NT	Nomex		1/5/10/25/50/75/100	Seam	Deep	220
PTFE	polytetrafluoroethylene		1/5/10	Seam	Deep	270
NMO	Nylon	Signal Monofilamenx	1/5/10/25/50/75/100.....1250	Seam	Surface	170
100	polypropylene	Melting and Blowing	1/5/10/25/50	Seam/Weld	Absorb	80
500	polypropylene		1/5/10/25/50	Seam/Weld	Absorb	80

AGF Absolute Filtration Efficiency Filter Bag

Technical Feature:

- Material: 8-12 layers PP; Melt-Blown Polyester
- 99% absolute filter efficiency, density change material to dirt holding capacity increased greatly and prolong the life of.
- Double outer protective layer to prevent the friction caused by the fiber loss problem with basket.
- All the bags are in accordance with the United States Food Administration (FDA) approved materials, suitable for food, beverage, and pharmaceutical industries.
- Integrated structure and unique bonding method of welding the bottom welding sealing method, is a stronger, more flexible.
- 100% pure melt blown polypropylene structure, not adding any resin, adhesive or surface treatment.
- 100% hot-melt welding technology



Application:

- Beer, wine, whiskey and other beverage filter
- Removal of fine particles of parts cleaning process
- Final filtration porcelain
- Final filter - vinegar
- Scavenging of active carbon
- Final filter hydraulic oil and lubricating oil

AGF filter Grade by Testing Result:

Model	Particle size when the different filtration efficiency					Size02@10m³/hr
	> 60%	> 90%	> 95%	> 99%	> 99.9%	
AGF51	-	-	0.15	0.45	1	0.25
AGF53	>80@0.15	0.3	0.45	0.5	2	0.17
AGF55	1	3	6	10	12	0.06
AGF57	8	13	16	20	25	0.02

Remark: Independent laboratory accreditation of filtration efficiency

Oil Absorbing Efficiency Filter Bag LCR-100

Technical Feature:

- Oil absorb bag widely used for highly precision media filtration .
- Hydrophobic oil filter bag cotton has excellent lipophilicity oil absorption speed of the oil absorption for 15-20 times, the weight of water content less than 0.1 times. High acidity, organic solvent resistance, good tensile strength. The liquid hydrocarbons in non-phacoemulsification trace clearance. This bag can not only remove oils that can effect the required different levels of clearance of particles that have the dual function is the best filtration products electroplating industry.
- These bags are available in two series, LCR-100 and LCR-500 .
- LCR-100 is made of 100% polypropylene melt-blown microfiber, 3 layers structure for 97% filter efficiency can hold up 250g dirt.
- High chemical resistance, Easy use. Can cleaning: unwanted oil, impurities, soft particles, gelatinous nature, protein.
- Application: electrophoretic paint coating line filter, wastewater treatment, water recycling, circuit board production automobile painting production line, metal casting, ultrafiltration of protection filter, spraying water to remove oil filter. The petroleum chemical industry, light industry, metallurgy, food, pharmaceutical, electronic field of solid-liquid separation and processing of automobile industry of pre treatment of cleaning, electrophoresis paint, spray rinse water, circulating water filtering paint industry, resin solvent purification treatment .



Oil Absorbing Efficiency Filter Bag LCR-500

Technical Feature:

- LCR-500 are made entirely of welded materials, without any joint seam, very high filtering efficiency.
- LCR-500 series bags feature a pleated design with different efficiency ratings available to choose from.Great for filter difficult media like gels.
- LCR-500 can hold up 1000g dirt with 95%-99% filtering efficiency.
- Use patent and transporting layers design, make the filtering area be up to max.Improve working performance and make operation cost lower.
- Replacing time-easier, faster, lower labor cost.
- Application:petrochemical, light and food, metallurgy, electronics, pharmaceutical, electrophoretic paint, paint.



String Wound Filter Cartridge

Technical Parameter:

- Media material: Polypropylene ,Cotton,Fiber Glass
- Core Material: Polypropylene,SUS 403,SUS 316
- Precision: 1μm~300μm
- Length: 10"、20"、30"、40"
- Outer diameter: 63-114mm(BB)
- Inner diameter: 30mm/28mm
- Connection: Flat, 222, 226
- Max work Temp: Polypropylene string match with plastic frame: 65 degrees
- Polypropylene string match with galvanized iron: 100 degrees
- Absorbent cotton match with stainless steel skeleton: 120 degrees



Pleated Filter Cartridge

Technical Parameter:

- Filtering accuracy: 0.01μm~70μm
- Flow area: ≥0.6m²
- Material of Film and frame: PP+PP, PES+PP, NMO+PP, Hydrophobe PTFE+PP, hydrophilic PTFE+PP, PTFE+ECTFE etc
- The cartridge length: 10 ", 20 ", 30 ", 40 "
- Outer diameter: 70mm
- Connection: Flat、222、226
- Seal: Silicone, Buna, EPDM, Viton,



Melt Blown Filter Cartridge

Technical Parameter:

- Material: Polypropylene
- Precision: 1μm~100μm
- Length: 5"、10"、20"、30"、40"
- Outer diameter: 63-114mm(BB)
- Inner diameter: 30mm/28mm
- Connection: Flat、222、226、etc.



Activated Carbon Filter Cartridge

Technical Parameter:

- Material: Carbon ,fiber contain carbon , carbon string wound
- Cover: polyester;
- Screen material: polypropylene
- Precision: 5μm
- Size: 10"、20"、30"、40"
- Seal: Buna
- Option types: Standard, high adsorption, big fat



Metal Filter Cartridge

Technical Parameter:

- Material: SS304, SS316L
- Precision: Pleated 1-1000μm, Frit: 0.5-200μm
- Length: 10"、20"、30"、40"
- Connection: Double open with gasket, 222+flat, 222+finned, 226+finned
- Seal: Buna, EPDM, Viton, PTFE, Silicone



Titanium Rod Filter Cartridge






Technical Parameter:

- Material: Titanium sponge
- Precision: 0.22-200μm
- Size: 10"、20"、30"、40"
- Connection: M20、M30、222、226 etc.
- Seal: Buna, EPDM, Viton, PTFE,Silicone



Application

EAST filter series product widely used in electronics, semiconductors, chemical, pharmaceutical, food, beverage, painting, paper making, automobile, printing ink, automobile、 water treatment etc various industrial field.

	<p>Food and beverage</p> <p>Fruit jelly, wine, beer etc beverage all need to filter impurity to improve finish product quality; condiment, concentrate which adding to beverage also need filtration; filter productive use water, remove yeast, suspended solid, Organic microbes and separation of additives</p>
	<p>Fine Chemical</p> <p>Recycle catalyst, filter acid, solvent, emulsion, dispersoid, filter gel from resin, Specially for remove active carbon and catalyst.</p>
	<p>Petrochemical</p> <p>Improve petro collected rate, filter amine liquor, glycol; Gas distillation process, oil exploitation; Chemical such as synthetic resin, remove coat, additive, insoluble, gelling, filter kerosene, lubricating oil etc.</p>
	<p>Pharmacy and biology</p> <p>Recycle active carbon raw material, catalyst; filter syrup for medical, extract liquor, pre filter crystalline liquid, So that meet the SIP, CIP industry sterilize requirement .</p>
	<p>Auto Industry</p> <p>Filtration for degreasing, phosphorizing and cleaning process, remove particles and adsorb oil in the electrophoretic paint, filter metal coatings and vanishes, filter engine fabrication coolant.</p>

Water treatment

- Waster treatment is physics and chemistry method to remove unwanted particle which in the liquid .
- General water treatment means: sewage water treatment and drink water treatment
- Bag filter housing general used for first step sewage water treatment, Remove the axunge, ferric ion, manganese ion and sludge. Bag filter also can used for drink water pre filtration before film filtration .

Function

- Intercept the floccule ,jelly, or ion exchange resin
- Remove scale or calcium compound
- Protection membrane, reduce the cost and prolong membrane life time.
- As the protection of the filter membrane filtration system

